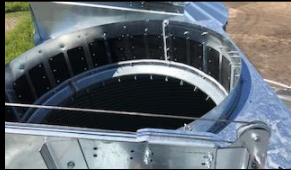


27` DIAMETER HOPPER BIN AND CONE COMPARISON CHART

DARMANI's value is as clear as Black and White

DARMANI LID

Easier to fill with larger opening (52")
NO restrictions – Opens 100%
Rack and pinion opening at bottom



DARMANI MATERIALS

*Heavier material
Bottom sheets (17 gauge)
Bottom Stiffeners (8 gauge)
Refer to Hopper bin Gauge material chart



DARMANI GALVANIZED HOPPER

Galvanized sheets 40 Degree slope
Cross bracing for added support



DARMANI CONE SLIDE GATE

Larger opening for faster unloading (18")
28" slide clearance for conveyors
Slide reinforcement to prevent leakage
Rack and pinion slide gate with outside handle



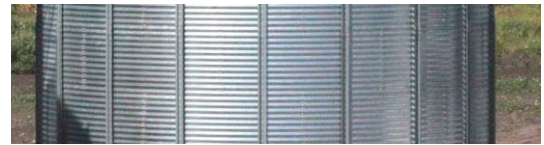
BRAND "W" LID

Smaller lid (33")
Spring style restricts opening
Pull handle rope



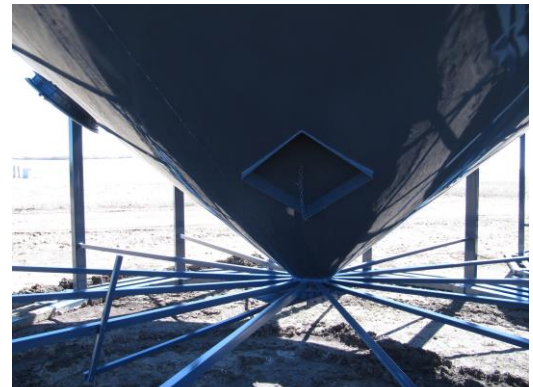
BRAND "W" STIFF AND SHEETS

Lighter gauge sheets on bottom *18 gauge
Some lighter gauge stiffeners used *12 gauge



BRAND "W" WELDED HOPPER

NOT GALVANIZED - Painted on outside only
with NO paint on inside
Less slope means more hang up as cones
Are either 30 or 35 degree slopes
NO CROSS BRACES FOR LEG SUPPORT
Angle iron interference when cleaning out



WELDED CONE SLIDE GATE

Smaller opening- slower unloading (12")
24" slide clearance isn't enough room for conveyors
NO slide reinforcement
Some use Steel on Steel



2708 HOPPER BIN COMPARISON CHART

See chart below for DARMANI'S Value added features that make a Black and White difference

SPECIFICATION	DARMANI	BRAND "W"	BRAND "W"
ENGINEERED DESIGN	YES	YES	YES
LIMITED WARRANTY	5 YEARS	5 YEARS	5 YEARS
BUSHEL SIZE	17040	17046	17046
GRAIN BIN LID			
LID SIZE	52"	33"	33"
LID OPENING STYLE	Track mount	SPRING	SPRING
LID POSITIVE DRIVE FORCE	STANDARD	N/A	N/A
DARMANI ADDED VALUE: -\$450/bin package (Adding the track mounted easy slide, posi-drive and wider lid for easier filling)			
GRAIN BIN ROOF			
ROOF LADDERS	STANDARD	STD.	STD.
ROOF INSPECTION	STANDARD	STD.	STD.
ROOF SLOPE	30 deg.	30 deg.	30 deg.
ROOF RING SUPPORT BRACE	STANDARD	N/A	N/A
DARMANI ADDED VALUE: -\$250/bin package (Adding the roof strengthening ring increases roof strength by #2000 lbs.)			
GRAIN BIN WALL SHEETS			
TENSILE STRENGTH	65 K.S.I.	65 K.S.I.	65 K.S.I.
STEEL GRADE	GRADE 50	GRADE 50	GRADE 50
CORRUGATION STYLE	WIDE	WIDE	WIDE
SHEET GAUGE (8 TIER)	20-20-20-20-20-17-17	20-20-20-20-20-18-18	20-20-20-20-20-18-18
DARMANI ADDED VALUE: -\$250/bin package (Extra metal in the bottom two tiers is important as most of the weight especially when doing heavy commodities or wet grain.)			
GRAIN BIN STIFFENERS/LADDERS			
EXTERIOR STIFFENED BIN	STANDARD	STANDARD	STANDARD
STIFFENERS RUN TO TOP	STANDARD	STANDARD	STANDARD
STIFFENER WIDTH	STANDARD WITH WINGS	WITHOUT WINGS	WITHOUT WINGS
SIDEWALL LADDERS	STANDARD	STANDARD	STANDARD
DARMANI ADDED VALUE: -\$300/bin package (Extra metal in the STYLE of stiffeners is important as most of the weight transfers from these stiffeners)			
HOPPER CONE			
	DARMANI GALVANIZED	BRAND "W" GALVANIZED	WELDED COMPETITOR
OVER DIMENSIONAL ----WIDE LOAD	NO	NO	YES
GALVANIZED SHEETS-CONE	YES	YES	NO-PAINTED
CONE TYPE	BOLT TOGETHER	BOLT TOGETHER	WELDED
CONE SLOPE	40 DEG.	40 DEG.	35 DEG.
MAIN BEAM	1/2" X 10	1/2"X10	3/8"X 8
CONE SHEETS GAUGE	10 G/12 GA	10 G/12 GA	12 GAUGE
MANHOLE	STD.	OPTIONAL	STD.
CONE LEG SUPPORTS	GALVANIZED X-BRACING	ANGLE IRON	ANGLE IRON
# OF LEG SUPPORTS	18	18	16 OR 18
SIZE OF LEGS	5"X5"	5"X5"	4X4 OR 5X5
SLIDE GATE CLEARANCE	28"	26"	24"
SLIDE GATE SUPPORT	STANDARD	N/A	N/A
RACK AND PINION	STANDARD	STANDARD	STEEL ON STEEL
HANDLE TO OUTSIDE	STANDARD	STANDARD	LEVER
DARMANI ADDED VALUE: -\$1800/bin package (Galvanized cone for longer lasting, Steeper slope means less hang up , Heavy duty bracing and band and posi-drive rack and pinion slide gate with outside handle and longer legs allowing for more clearance to accommodate underneath conveyors)			
FOUNDATIONS (see attached sheets)			
	See skid comparison guide		
CONCRETE MOUNT	AVAIL.	AVAIL.	AVAIL.
ENGINEERED STEEL FOUNDATIONS	AVAIL.	N/A	AVAIL.
HEAVY DUTY STEEL SKID (5 ROW)	DARMANI exclusive	N/A	N/A
STEEL SKID # OF ROWS	5 ROW	N/A	3 OR 4 ROW
STEEL SKID SIZE OF TUBING	4"X6"	N/A	4X4/4X6/4X8
SKID BRACED BY	HD 5x5 tubing	N/A	PLATE
AERATION (see attached sheets)			
	See air comparison guide		
HOPPER AERATION	AVAIL.	AVAIL.	AVAIL.
STYLE	27-OPEN /CROSS	ROCKET-FULL TUBE	ROCKET -24-OPEN
AIR SUPPORT (TUBE)	3" TUBING	TUBING	TUBING
REGULAR/HEAVY DUTY WIND ANCHORS	AVAIL.	REG. ONLY	REG. ONLY