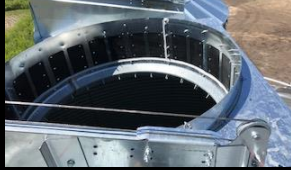


# 24` DIAMETER HOPPER BIN AND CONE COMPARISON CHART

DARMANI's value is as clear as Black and White

## DARMANI LID

Easier to fill with larger opening (52")  
NO restrictions – Opens 100%  
Rack and pinion opening at bottom



## DARMANI MATERIALS

\*Heavier material  
bottom sheets (17 gauge)  
Stiffeners- (8 gauge)  
Refer to Hopper bin Gauge material chart



## DARMANI GALVANIZED HOPPER

Galvanized sheets 40 Degree slope  
Cross bracing for added support



## DARMANI CONE SLIDE GATE

Larger opening for faster unloading (18")  
28" slide clearance for conveyors  
Slide reinforcement to prevent leakage  
Rack and pinion slide gate with outside handle



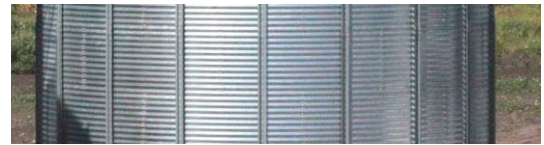
## BRAND "W" LID

Smaller lid (33")  
Spring style restricts opening  
Pull handle rope



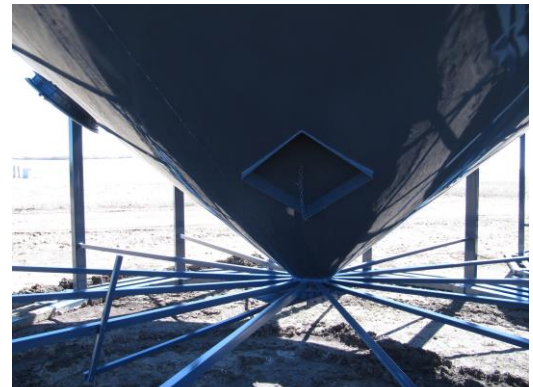
## BRAND "W" STIFF AND SHEETS

Lighter gauge sheets on bottom \*18 gauge  
Lighter gauge stiffeners \*12 gauge



## BRAND "W" WELDED HOPPER

NOT GALVANIZED - Painted on outside only  
with NO paint on inside  
Less slope means more hang up as cones  
Are either 30 or 35 degree slopes  
NO CROSS BRACES FOR LEG SUPPORT  
Angle iron interference when cleaning out



## WELDED CONE SLIDE GATE

Smaller opening- slower unloading (12")  
24" slide clearance isn't enough room for conveyors  
NO slide reinforcement  
Some use Steel on Steel



# 2408 HOPPER BIN COMPARISON CHART

See chart below for DARMAN'S Value added features that make a Black and White difference

SPECIFICATION	DARMANI	BRAND "W"	BRAND "W"
ENGINEERED DESIGN	YES	YES	YES
LIMITED WARRANTY	5 YEARS	5 YEARS	5 YEARS
BUSHEL SIZE	13208	17046	17046
<b>GRAIN BIN LID</b>			
LID SIZE	52"	33"	33"
LID OPENING STYLE	Track mount	SPRING	SPRING
LID POSITIVE DRIVE FORCE	STANDARD	N/A	N/A
<b>DARMANI ADDED VALUE: -\$450/bin package (Adding the track mounted, posi-drive and wider lid)</b>			
<b>GRAIN BIN ROOF</b>			
ROOF LADDERS	STANDARD	STD.	STD.
ROOF INSPECTION	STANDARD	STD.	STD.
ROOF SLOPE	30 deg.	30 deg.	30 deg.
ROOF RING SUPPORT BRACE	STANDARD	N/A	N/A
<b>DARMANI ADDED VALUE: -\$200/bin package (Adding the roof strengthening ring increases roof strength by #2000 lbs. )</b>			
<b>GRAIN BIN WALL SHEETS</b>			
TENSILE STRENGTH	65 K.S.I.	65 K.S.I.	65 K.S.I.
STEEL GRADE	GRADE 50	GRADE 50	GRADE 50
CORRUGATION STYLE	WIDE	WIDE	WIDE
SHEET GAUGE (8 TIER)	20-20-20-20-20-17-17	20-20-20-20-20-18-18	20-20-20-20-20-18-18
<b>DARMANI ADDED VALUE: -\$200/bin package</b>			
(Extra metal in the bottom two tiers is important as most of the weight especially when doing heavy commodities or wet grain. )			
<b>GRAIN BIN STIFFENERS/LADDERS</b>			
EXTERIOR STIFFENED BIN	STANDARD	STANDARD	STANDARD
STIFFENERS RUN TO TOP	STANDARD	STANDARD	STANDARD
STIFFENER WIDTH	STANDARD WITH WINGS	WITHOUT WINGS	
SIDEWALL LADDERS	STANDARD	STANDARD	STANDARD
<b>DARMANI ADDED VALUE: -\$240/bin package</b>			
(Extra metal in the bottom two tiers is important as most of the weight especially when doing heavy commodities or wet grain. )			
<b>HOPPER CONE</b>			
	<b>DARMANI GALVANIZED</b>	<b>BRAND "W" GALVANIZED</b>	<b>WELDED COMPETITOR</b>
OVER DIMENSIONAL ----WIDE LOAD	NO	NO	YES
GALVANIZED SHEETS-CONE	YES	YES	NO-PAINTED
CONE TYPE	BOLT TOGETHER	BOLT TOGETHER	WELDED
CONE SLOPE	40 DEG.	40 DEG.	35 DEG.
MAIN BEAM	1/2" X 10	1/2"X10	3/8"X 8
CONE SHEETS GAUGE	10 G/12 GA	10 G/12 GA	12 GAUGE
MANHOLE	STD.	OPTIONAL	STD.
CONE LEG SUPPORTS	GALVANIZED X-BRACING	ANGLE IRON	ANGLE IRON
# OF LEG SUPPORTS	18	18	16 OR 18
SIZE OF LEGS	5"X5"	5"X5"	4X4 OR 5X5
SLIDE GATE CLEARANCE	28"	26"	24"
SLIDE GATE SUPPORT	STANDARD	N/A	N/A
RACK AND PINION	STANDARD	STANDARD	STEEL ON STEEL
HANDLE TO OUTSIDE	STANDARD	STANDARD	LEVER
<b>DARMANI ADDED VALUE: -\$1500/bin package</b>			
(Galvanized cone for longer lasting, Steeper slope means less hang up , Heavy duty bracing and band and posi-driver rack and pinion slide gate with outside handle and more clearance to allow for underneath conveyors)			
<b>FOUNDATIONS (see attached sheets)</b>			
	See skid comparison guide		
CONCRETE MOUNT	AVAIL.	AVAIL.	AVAIL.
ENGINEERED STEEL FOUNDATIONS	AVAIL.	N/A	AVAIL.
HEAVY DUTY STEEL SKID (4 ROW)	DARMANI exclusive	N/A	N/A
STEEL SKID # OF ROWS	4 ROW	N/A	3 OR 4 ROW
STEEL SKID SIZE OF TUBING	4"X6"	N/A	4X4/4X6/4X8
SKID BRACED BY	HD 5x5 tubing	N/A	PLATE
<b>AERATION (see attached sheets)</b>			
	See air comparison guide		
HOPPER AERATION	AVAIL.	AVAIL.	AVAIL.
STYLE	27-OPEN	ROCKET-FULL TUBE	24-OPEN
AIR SUPPORT (TUBE)	3" TUBING	TUBING	TUBING
REGULAR/HEAVY DUTY WIND ANCHORS	AVAIL.	REG. ONLY	REG. ONLY