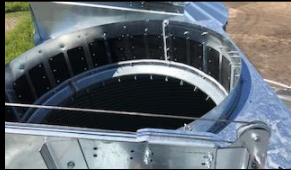


# 21` DIAMETER HOPPER BIN AND CONE COMPARISON CHART

DARMANI's value is as clear as Black and White

## DARMANI LID

Easier to fill with larger opening (52")  
NO restrictions – Opens 100%  
Rack and pinion opening at bottom



## DARMANI MATERIALS

\*Heavier material  
bottom sheets (17 gauge)  
Stiffeners- (8 gauge)



## DARMANI GALVANIZED HOPPER

Galvanized sheets 40 Degree slope  
Cross bracing for added support



## DARMANI CONE SLIDE GATE

Larger opening for faster unloading (18")  
28" slide clearance for conveyors  
Slide reinforcement to prevent leakage  
Rack and pinion slide gate with outside handle



## BRAND "W" LID

Smaller lid (33")  
Spring style restricts opening  
Pull handle rope



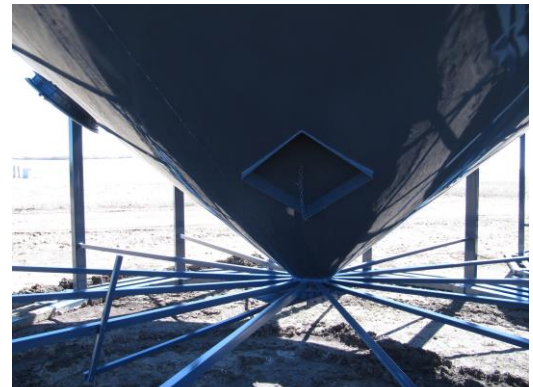
## BRAND "W" STIFF AND SHEETS

Lighter gauge sheets on bottom \*18 gauge  
Lighter gauge stiffeners \*12 gauge



## BRAND "W" WELDED HOPPER

NOT GALVANIZED - Painted on outside only  
with NO paint on inside  
Less slope means more hang up as cones  
Are either 30 or 35 degree slopes  
NO CROSS BRACES FOR LEG SUPPORT  
Angle iron interference when cleaning out



## WELDED CONE SLIDE GATE

Smaller opening- slower unloading (12")  
24" slide clearance isn't enough room for conveyors  
NO slide reinforcement  
Some use Steel on Steel



# 2108 HOPPER BIN COMPARISON CHART

See chart below for DARMAN'S Value added features that make a Black and White difference

| SPECIFICATION   | DARMANI                   | BRAND "W"                   | BRAND "W"                |
|---|---------------------------|-----------------------------|--------------------------|
| ENGINEERED DESIGN   | YES                       | YES                         | YES                      |
| LIMITED WARRANTY  | 5 YEARS                   | 5 YEARS                     | 5 YEARS                  |
| BUSHEL SIZE   | 9970                      | 10073                       | 9850                     |
| <b>GRAIN BIN LID</b>  |                           |                             |                          |
| LID SIZE  | 52"                       | 33"                         | 33"                      |
| LID OPENING STYLE   | Track mount               | SPRING                      | SPRING                   |
| LID POSITIVE DRIVE FORCE  | STANDARD                  | N/A                         | N/A                      |
| <b>DARMANI ADDED VALUE: -\$450/bin package (Adding the track mounted, posi-drive and wider lid)</b>   |                           |                             |                          |
| <b>GRAIN BIN ROOF</b>   |                           |                             |                          |
| ROOF LADDERS  | STANDARD                  | STD.                        | STD.                     |
| ROOF INSPECTION   | STANDARD                  | STD.                        | STD.                     |
| ROOF SLOPE  | 30 deg.                   | 30 deg.                     | 30 deg.                  |
| ROOF RING SUPPORT BRACE   | STANDARD                  | N/A                         | N/A                      |
| <b>DARMANI ADDED VALUE: -\$200/bin package (Adding the roof strengthening ring increases roof strength by #2000 lbs. )</b>  |                           |                             |                          |
| <b>GRAIN BIN WALL SHEETS</b>  |                           |                             |                          |
| TENSILE STRENGTH  | 65 K.S.I.                 | 65 K.S.I.                   | 65 K.S.I.                |
| STEEL GRADE   | GRADE 50                  | GRADE 50                    | GRADE 50                 |
| CORRUGATION STYLE   | WIDE                      | WIDE                        | WIDE                     |
| SHEET GAUGE (8 TIER)  | 20-20-20-20-20-17-17      | 20-20-20-20-20-18-18        |                          |
| <b>DARMANI ADDED VALUE: -\$175/bin package</b>  |                           |                             |                          |
| <b>(Extra metal in the bottom two tiers is important as most of the weight especially when doing heavy commodities or wet grain. )</b>  |                           |                             |                          |
| <b>GRAIN BIN STIFFENERS/LADDERS</b>   |                           |                             |                          |
| EXTERIOR STIFFENED BIN  | STANDARD                  | STANDARD                    | STANDARD                 |
| STIFFENERS RUN TO TOP   | STANDARD                  | STANDARD                    | STANDARD                 |
| STIFFENER WIDTH   | STANDARD WITH WINGS       | WITHOUT WINGS               |                          |
| SIDEWALL LADDERS  | STANDARD                  | STANDARD                    | STANDARD                 |
| <b>DARMANI ADDED VALUE: -\$200/bin package</b>  |                           |                             |                          |
| <b>(Extra metal in the bottom two tiers is important as most of the weight especially when doing heavy commodities or wet grain. )</b>  |                           |                             |                          |
| <b>HOPPER CONE</b>  |                           |                             |                          |
|   | <b>DARMANI GALVANIZED</b> | <b>BRAND "W" GALVANIZED</b> | <b>WELDED COMPETITOR</b> |
| OVER DIMENSIONAL ----WIDE LOAD  | NO                        | NO                          | YES                      |
| GALVANIZED SHEETS-CONE  | YES                       | YES                         | NO-PAINTED               |
| CONE TYPE   | BOLT TOGETHER             | BOLT TOGETHER               | WELDED                   |
| CONE SLOPE  | 40 DEG.                   | 45 DEG.                     | 35 DEG.                  |
| MAIN BEAM   | 3/8" X 10                 | 3/8"X10                     | ¼ or 3/8" X 8            |
| CONE SHEETS GAUGE   | 12 GA                     | 12 GA                       | 14/12 GAUGE              |
| MANHOLE   | STD.                      | OPTIONAL                    | STD.                     |
| CONE LEG SUPPORTS   | GALVANIZED X-BRACING      | ANGLE IRON                  | ANGLE IRON               |
| # OF LEG SUPPORTS   | 14                        | 14                          | 12 or 14                 |
| SIZE OF LEGS  | 5"X5"                     | 5"X5"                       | 4X4 OR 5X5               |
| SLIDE GATE CLEARANCE  | 28"                       | 26"                         | 24"                      |
| SLIDE GATE SUPPORT  | STANDARD                  | N/A                         | N/A                      |
| RACK AND PINION   | STANDARD                  | STANDARD                    | STEEL ON STEEL           |
| HANDLE TO OUTSIDE   | STANDARD                  | STANDARD                    | LEVER                    |
| <b>DARMANI ADDED VALUE: -\$1200/bin package</b>   |                           |                             |                          |
| <b>(Galvanized cone for longer lasting, Steeper slope means less hang up , Heavy duty bracing and band and posi-driver rack and pinion slide gate with outside handle and more clearance to allow for underneath conveyors)</b> |                           |                             |                          |
| <b>FOUNDATIONS (see attached sheets)</b>  |                           |                             |                          |
|   | See skid comparison guide |                             |                          |
| CONCRETE MOUNT  | AVAIL.                    | AVAIL.                      | AVAIL.                   |
| ENGINEERED STEEL FOUNDATIONS  | AVAIL.                    | N/A                         | AVAIL.                   |
| HEAVY DUTY STEEL SKID (4 ROW)   | DARMANI exclusive         | N/A                         | N/A                      |
| STEEL SKID # OF ROWS  | 4 ROW                     | N/A                         | 3 ROW                    |
| STEEL SKID SIZE OF TUBING   | 4"X6"                     | N/A                         | 4X4/4X6                  |
| SKID BRACED BY  | HD 5x5 tubing             | N/A                         | PLATE                    |
| <b>AERATION (see attached sheets)</b>   |                           |                             |                          |
|   | See air comparison guide  |                             |                          |
| HOPPER AERATION   | AVAIL.                    | AVAIL.                      | AVAIL.                   |
| STYLE   | 27-OPEN                   | ROCKET-FULL TUBE            | 24-OPEN                  |
| AIR SUPPORT (TUBE)  | 3" TUBING                 | TUBING                      | TUBING                   |
| REGULAR/HEAVY DUTY WIND ANCHORS   | AVAIL.                    | REG. ONLY                   | REG. ONLY                |